

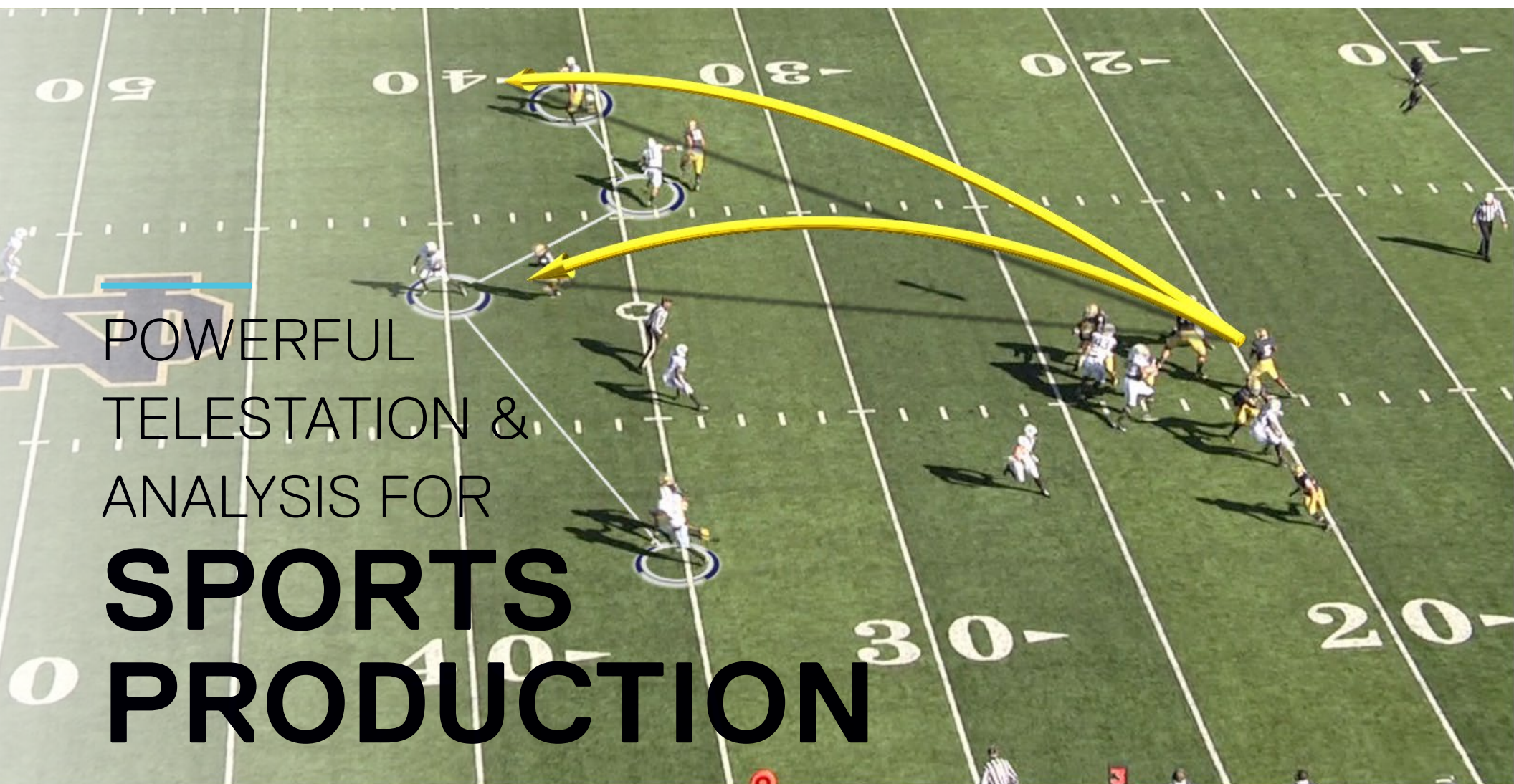


Powerful Telestraitont & Analysis For Sports Production

Bringing Game-Play To Life Through
The Power Of The Illustrated Replay™

PAINT

PRODUCT INFORMATION SHEET



POWERFUL
TELESTATION &
ANALYSIS FOR
**SPORTS
PRODUCTION**

Paint is a powerful yet simple to use sports analysis tool. It is designed specifically to be used by sports pundits, commentators or even assistant producers to help them highlight and enhance their analysis of sport. Its intuitive interface and broad functionality means that informative and visually appealing sports highlights are quickly and easily created without the need for additional infrastructure or specialist operators. We call the resulting combination of replay, graphics and analysis, **Illustrated Replay™**.



NEW! PAINT 7.0

The newest version of ChyronHego's leading telestration and analysis solution, Paint 7.0, includes many new features, including 3D calibration and arrow, 4K in/out, NDI in/out, and Formation Tool. Paint 7.0 is available now.

Paint comes complete with a comprehensive set of tools for visualizing different parts of the play or highlighting individual player performance. These tools feature freehand drawing as well as clarifying highlights, zooming, marking and other common telestration tools. In addition, the system is totally self-contained and easy to set up requiring only simple SDI-in and SDI-out connections to work with either SD, HD or 4K content.

CHROMA-KEYED GRAPHICS AND TRACKING ENGINE

The internal chroma-keyer enables any of the highlighting graphics to appear on the pitch without covering lines, the ball or the players. Paint also features an internal image-based real-time tracking engine, enabling graphics to stay tied-to-ground, even when the camera moves. The look and feel

of all objects can be customized using standard image editing software and the built-in toolset editor enables the analysis graphics to match the overall graphics look and feel of your broadcast.

CONFIGURABLE USER INTERFACE

The operator can easily change the user interface. This is highly appreciated by many broadcasters that use the system on camera where the user interface is viewable to the audience. It can also be used to create sport-specific setups, or personalized setups for different users.

BUILT-IN MULTI-CHANNEL DISC RECORDER

Paint features a built-in disc recorder to allow easy ingest of video clips for analysis. For convenient play-out, the Paint user has complete video control through built-in start, stop and jog functionality. Additionally, the disc recorder can be complemented by an EVS and external clip import interface. This allows the Paint operator to import clips from an EVS, an external network drive or even a USB drive.

HOVER TO VIEW LARGER IMAGE

CODECS SUPPORTED

Import/Export

(Partial List)

J2K; MJPEG;

DNxHD; H.264 /

AVC/ MPEG-4 AVC

/ MPEG-4 part 10



KEY FEATURES

- The 3D pitch calibration and arrow tool allows for enhanced real time 3D graphics, showing ball trajectory and enhanced on field visualization. A dedicated sports telestrator designed with ease-of-use in mind.
- The Moveable Players effect allows the commentator or operator to move players to different positions on the pitch or field. The players may be highlighted with a glow, removed from the field, and they can also be scaled in size.
- Includes a built-in chroma keyer and tracking engine for tied-to-ground graphics. A built-in disc recorder is also included.
- User interface can be branded to match house-style graphics look and feel
- The Unflattened Clip Export feature allows a clip to be passed between Paint servers while keeping all of the elements editable.
- The new formation tool is a live interactive tool where talent can tell tactical stories using on screen counters, and telestrate on the field. Available for NFL, Basketball, Soccer, Ice Hockey, Rugby, Baseball and Handball



TECHNICAL SPECIFICATIONS

BASE SYSTEM CONFIGURATION

- Microsoft® Windows® 7 Ultimate 64-bit O/S
- Quad-Core Intel® Xeon® Processor
- 8GB RAM
- NVIDIA® Quadro® K2000 Professional Series Graphics Accelerator
- 200GB SSD System Storage
- Keyboard and mouse

DIMENSIONS

- Height: 2RU, 8.9cm/3.5in.
- Width: 43.7cm/17.2in.
- Depth: 63cm/24.8in.
- Weight: 22.7kg/50lbs

POWER

- 2 x 740 Watt Redundant AC-DC high-efficiency power supplies
- AC Input 100-240V, 60-50Hz, 9 Amp Max, 3.2 Amps @120VAC

MEDIA STORAGE

- 1 x 256GB SSD per camera input

VIDEO STANDARDS

- SD 576i 50Hz 16:9/4:3 (PAL)
- SD 486i 59.94Hz 16:9/4:3 (NTSC)
- HD 720p 50/59.94Hz 16:9
- HD 1080i 50/59.94Hz 16:9
- HD 1080p 50/59.94 Hz 16:9

INPUTS/OUTPUTS

- Input: 1 x SDI Input on a 75 Ω BNC Connector
- Output: 1 x SDI Output on a 75 Ω BNC Connector
- Genlock: Bi-level & Tri-level Analogue Genlock, 3G-SDI, HD-SDI, SD-SDI on a 75 Ω BNC Connector
- Single RS232 port
- 2 RJ45 Gigabit Ethernet connectors
- 4 USB 2.0 ports rear

5 REASONS

PAINT

Paint is a powerful yet simple to use sports analysis tool. It is designed specifically to be used by sports pundits, commentators or even assistant producers to help them highlight and enhance their analysis of sport.

Its intuitive interface and broad functionality means that informative and visually appealing sports highlight clips can quickly be created without the need for additional infrastructure or specialist operators.

1

A dedicated sports telestrator designed with ease-of-use in mind.

- Ease of use is a hallmark of Paint. Specialist operators are never required and it's intuitive interface can be customized and personalized for different users.

2

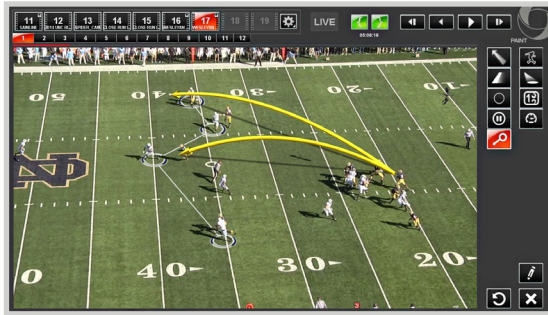
Built-in disk recorder.

- With recording capability for up to 3 feeds, there is never a need to tie up expensive channels on replay servers.

3

Instant tracking.

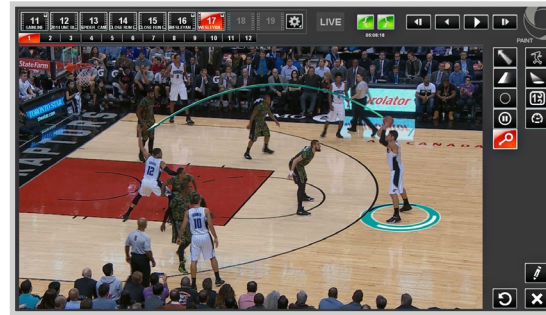
- Most cameras, including spider cameras, can be instantly tracked without the need for any calibration.



4

Fast turnaround.

- With simplicity comes quickness. Paint allows the user to be quick in turning around enhanced highlights. As a result, your content is more relevant to the viewer more of the time.



5

Paint is sport agnostic.

- With no need for specific plug ins or licenses, Paint can be used on any sports production. And because the Paint interface can be reskinned to match your brand, Paint can take on double-duty as an on-air touchscreen.



ABOUT CHYRONHEGO

ChyronHego, a portfolio company of Vector Capital, is a global leader in products, services, and solutions for the broadcast and sports industries. Specializing in live television, news, and sports production, ChyronHego offers some of the industry's most widely deployed solutions — including Lyric®, the world's most popular broadcast graphics creation and playout offering; the all-new CAMIO® Universe newsroom workflow; and TRACAB® Optical Tracking, the global leader in optical sports tracking systems as well as Click Effects, the most proven and versatile stadium broadcast family of graphics products. Headquartered in Melville, New York, ChyronHego also has offices in the Czech Republic, Denmark, Finland, Germany, Mexico, the Netherlands, Norway, Singapore, Slovak Republic, Sweden, and the United Kingdom.

For more information on ChyronHego, visit www.chyronhego.com.

CONTACT SALES AND
SCHEDULE A DEMO @

NORTH AMERICA

+1.631.845.2000 |

EMEA

+46 8 534 88 300 |

LATIN AMERICA

+1.305.972.1396

ASIA/PACIFIC

+65.64071330 |

JOIN THE CONVERSATION
ONLINE WITH CHYRONHEGO @

www.chyronhego.com

Copyright 2018 ChyronHego Corporation. All rights reserved. ChyronHego is a trademark of ChyronHego Corporation. All other tradenames referenced are service marks, trademarks, or registered trademarks of their respective companies. Specifications subject to change without notice.