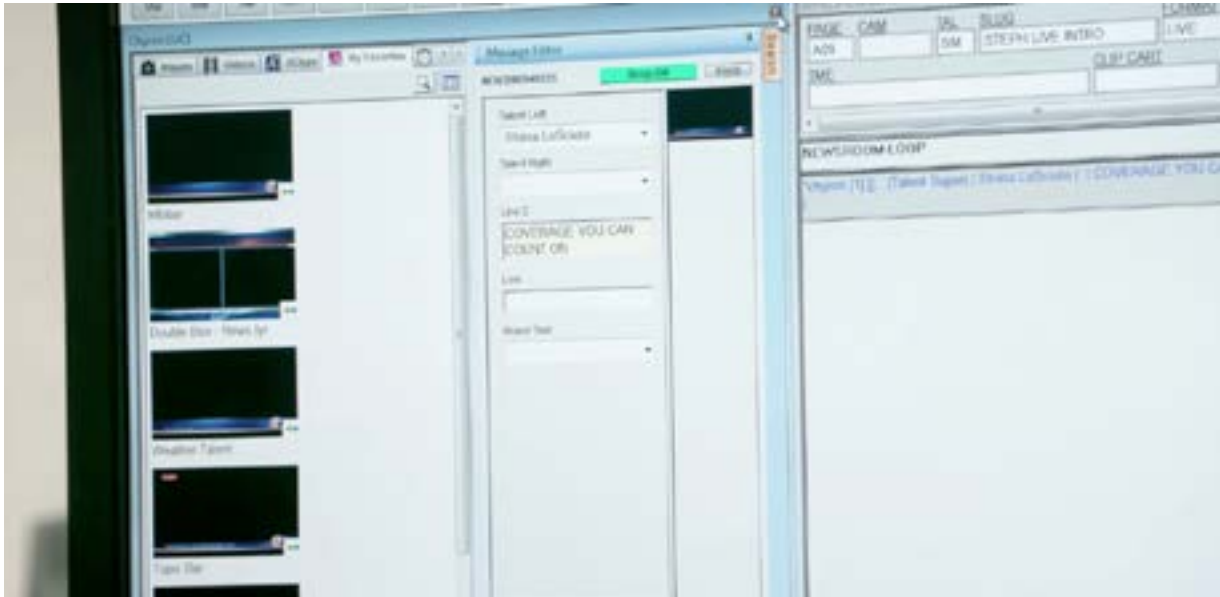
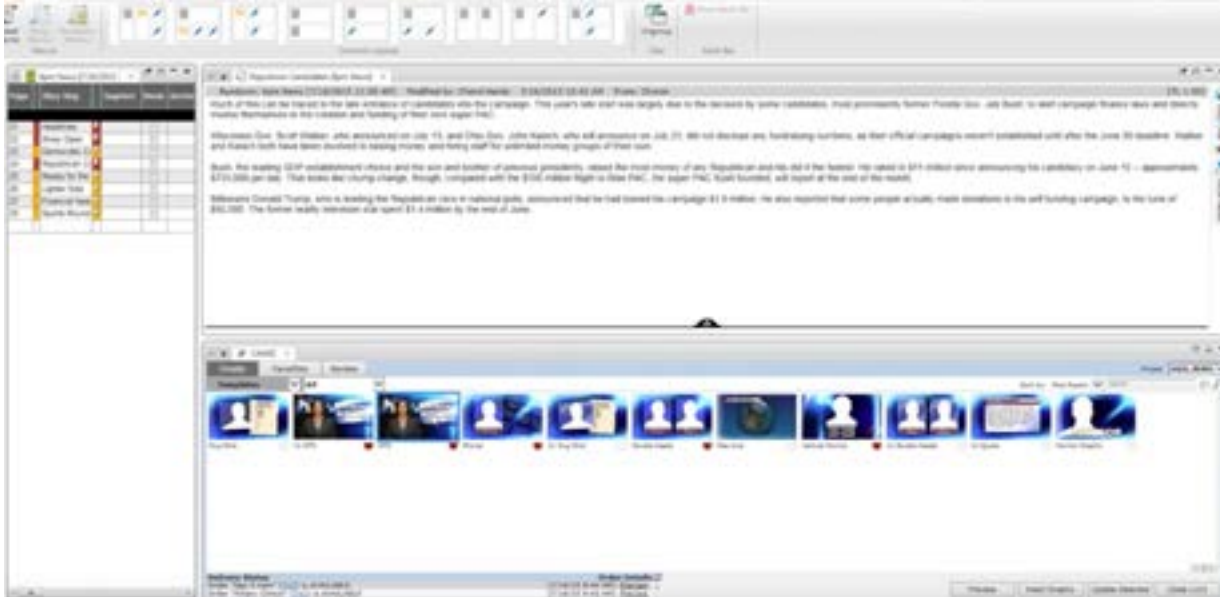


# CAMIO



MOS-driven graphics asset management solution.





## USING THE CAMIO® INTERFACE (LUCI), PRODUCERS AND JOURNALISTS CAN:

- Build stories within the newsroom system rundown via the industry-standard MOS protocol
  - Newsroom system integrations include AP ENPS, Avid iNEWS and Media Central, Dalet Galaxy, Octopus, Ross Video Inception and SCISYS Open Media.
- Browse and fulfill pre-defined templates for:
  - **Broadcast graphics** (CG, video walls, channel branding, weather, etc.) used in PRIME or LyricX graphics systems
  - **Production automation** (camera switching, DVE, etc.) provided by Vidigo production-in-a-box solution
  - **Virtual sets or augmented reality graphics** provided by FRESH
- Assemble on-the-fly graphics and images within the newsroom system to publish directly to the rundown for on-air playback.
- Render and import graphics into your favorite NLE timeline with full-quality previews.



With the CAMIO® Rundown (ISQ), directors and operators can live preview multiple rundown playlists from a configurable user interface.

- Drive the show via manual control or automated playout
- Make last-minute changes easily

*Ideal for distributed teams, CAMIO® 's “create once, publish to many” approach ensures that template or asset changes made at a centralized design hub synchronize automatically to any or all remote “spoke” stations or production teams.*

#### *Reskin Graphic Templates:*

- *A powerful feature that should not be overlooked: Change your entire broadcast color palette, look and branding with a single click, on the fly.*
- *How it works: Build a single Base Scene file for each distinct look or branding. The Base Scene determines the look of all templates, including colors, fonts, logos and more. Simply change the Base Scene file directly from the newsroom computer system client to re-style the look of all templates.*
- *Examples: Easily switch from standard news to breaking news looks, quickly update graphics for a story from a different rundown, reuse stories from another station in your group, and more.*

# KEY FEATURES



## CUSTOM SAVED ITEMS

Scenes that are frequently used can be stored in a Saved Items list. These lists can be customized with folder-based hierarchy with global parameters and permissions.



## UNIFIED STORY-DRIVEN WORKFLOW

From simple fulfillment of text to streamlined user compositing

- **CAMIO® Interface (LUCI)** provides simple content-editing features to drive stories independent of the Art Department.
- Connectivity to **Axis Graphics**, ChyronHego's cloud-based graphics order management solution, allows



## ASSET ANYTIME, ANYPLACE:

For quick and simple browsing, all CAMIO® templates and assets are managed by a database for Advanced Search capabilities based on extensible metadata. Integration with Adobe® XMP® metadata means that embedded information automatically populates text fields to ensure design compliance.



## ADAPTABLE TO HUB & SPOKE DISTRIBUTION

- Optimized for distributed teams, CAMIO®'s built-in folder management functionality is adapted for broadcast graphics with features like automated font distribution and installation/exclusion rules.
- Metadata and Autofill Replication = Effective metadata is as important as the assets. CAMIO ensures this metadata is kept close to the assets as they are distributed throughout the network.

- journalists to easily create maps, 3D charts and financial quotes.
- Template-based workflow extends to all of ChyronHego's graphics and automation products:
  - PRIME Graphics
  - LyricX
  - FRESH
  - Vidigo News.

**CAMIO®** supports native plugins for Avid Media Composer, Grass Valley EDIUS and Adobe Premiere Creative Cloud, designers or producers can import full-quality, rendered animated graphics directly into a story timeline.



## BUILT-IN QUALITY CONTROL

- CAMIO®'s embedded quality assurance previews ensure intuitive and uniform execution of graphics throughout an entire show.
- The CAMIO® Rundown (ISQ) automatically corrects the playlist and cues the appropriate graphics during rundown changes to give your operators complete confidence that the graphics are ready for air.

# TECHNICAL SPECIFICATIONS

MOS-driven graphics asset management solution.

## SUPPORTED NEWSROOM COMPUTER SYSTEM (NRCS)

AP ENPS, Avid iNEWS, and Media Central, Dalet, Octopus, Ross Video Inception and SCISYS Open Media

## LANGUAGES SUPPORTED

Unicode support making CAMIO® 's interfaces available in many languages.

## NON-LINEAR EDITOR (NLE) PLUGINS SUPPORTED

Grass Valley EDIUS 7 & 8, Adobe Premiere Creative Cloud, and Avid Media Composer.

## AUTOMATION SUPPORTED

Sony ELC, Grass Valley Ignite, Ross Video Overdrive

## BASE SYSTEM CONFIGURATION

- Microsoft® Windows® Server 2016 Standard Edition OS
- Xeon E5 Quad-Core Intel® Processor
- 32GB DDR3 RAM
- NVIDIA Quadro 4000 Graphics accelerator card

Software-only solution available for customer provided hardware and VM platform.

## DIMENSIONS

- Chassis: 2RU
- Height: 8.9cm/3.5"
- Width: 43.7cm/17.2"
- Depth: 64.7cm/25.5"
- Weight: 23.6kg/52lbs.

## POWER REQUIREMENTS

Power Supply: 740W redundant, AC power supplies

- Power Requirements: 100-240VAC,
- 50/60Hz, 9A @120VAC / 3.5A @240VAC

# SERVICES

ChyronHego is known for its end-to-end customer service. We partner with our customers from the initial project design, to project management, training, on-air launch support and post-launch follow-up.

## PROJECT MANAGEMENT AND COMMISSIONING

Project Management and Commissioning are part of the turn-key services that we offer. This ensures your investment is properly installed from Day One by a certified ChyronHego representative.

## DESIGN AND OPERATION TRAINING

We offer Design and Operation training, either in your facility or via our on-line web portal. Our expert trainers can teach your staff the most efficient way to create and deliver stunning content for your productions.

## EXTENDED WARRANTIES

Finally, all ChyronHego products come with a One (1) year factory-backed warranty (parts, labor & software upgrades). Extended Warranties on all your purchases can be added at any time for an annual fee. Please contact our sales professionals.

# ABOUT CHYRONHEGO

ChyronHego is ushering in the next generation of storytelling in the digital age. Founded in 1966 as Chyron, the company pioneered broadcast titling and graphics systems. With a strong foundation built on over 50 years of innovation and efficiency, the name Chyron is synonymous with broadcast graphics. ChyronHego continues that legacy as a global leader focused on customer-centric broadcast solutions. Today, the company offers production professionals the industry's most comprehensive software portfolio for designing, sharing, and playing live graphics to air with ease. ChyronHego products are increasingly deployed to empower OTA & OTT workflows and deliver richer, more immersive experiences for audiences and sports fans in the arena, at home, or on the go.

## CONTACT SALES

### NORTH AMERICA

+1.631.845.2000 | [noram@chyronhego.com](mailto:noram@chyronhego.com)

### EMEA

+46 8 534 88 300 | [emea@chyronhego.com](mailto:emea@chyronhego.com)

### LATIN AMERICA

+1.305.972.1396

### ASIA/PACIFIC

+65.64071330 | [asia@chyronhego.com](mailto:asia@chyronhego.com)

