



Advanced Stadium & Arena Graphics

Powerful Fan Engagement

CLICK EFFECTS PRIME

PRODUCT INFORMATION SHEET



POWERFUL FAN ENGAGEMENT

Click Effects PRIME is ChyronHego's highly integrated, turnkey graphics authoring solution for live arena- and stadium-based A/V presentations.

Click Effects PRIME unites the advanced authoring, rendering, and data binding power of ChyronHego's renowned PRIME graphics system with the industry-leading arena graphics generation and custom digital display control of the Click Effects CrossFire and Blaze solutions.

GIVE FANS MORE

Today's Sports Venue Producers face a challenge. Fans want to visually experience many of the same visual elements, such as enhanced graphics and play-by-play analysis, that they're used to seeing on live TV.

By leveraging ChyronHego's 64-bit, all-software PRIME rendering engine and authoring environment, Click Effects PRIME exposes users to powerful features such as real-time rendering of dynamic and data-bound 3D objects with tools such as shaders, lights, materials, and video texturing.

Click Effects PRIME not only supports 4K, but provides instant integration into your existing HD workflow. This means no clip conversion and your existing video sources and assets are always available within your new 4K workflow.

But it doesn't stop there. At ChyronHego, we believe in true product integration that leads to true product innovation. Hooks to ChyronHego's real-time player and ball-tracking solutions enable Click Effects PRIME users to create the same compelling play-by-play video analysis that viewers are accustomed to seeing on sports television broadcasts.

If you are a current customer, then you're going to love the all-new Click Effects PRIME. For starters, Click Effects PRIME supports 4K render output sizes either through HD-SDI, DVI, or DisplayPort connections. Add more I/O, SDI preview options, lower latency, and incredible CG capabilities, and you'll agree that upgrading to Click Effects PRIME takes your in-venue fan experience to an all-new level.

The Click Effects product line is trusted by thousands of stadiums and arenas across the globe. Contact us today to schedule a demo or order an upgrade to Click Effects PRIME.





KEY FEATURES

- **4K I/O**

Supports 4K with very low latency with up to 4 channels of HD-SDI key/fill playout and up to 8 channels of HD-SDI video playout.

- **DVI Interface**

Click Effects PRIME is unique in its ability to offer a powerful CG render engine operating on a DVI interface. Switch between HD-SDI and DVI across any size screen regardless of aspect ratio.

- **Advanced Authoring**

Click Effects PRIME unites the advanced authoring, rendering, data binding, and asset sharing power of ChyronHego's renowned PRIME graphics system.



KEY FEATURES

- **TRACAB Player Tracking Integration**

Hooks to ChyronHego's real-time player and ball-tracking products enable Click Effects PRIME users to create the same compelling play-by-play video analysis that viewers are accustomed to seeing on sports television broadcasts.

- **Exceptional Ease of Use**

Intuitively control Click Effects PRIME and other third-party systems, such as scalers and lighting, from one seat and with one click of the mouse.

- **Full Redundancy**

Seamlessly backs up one or more Click Effects PRIME systems with BackDraft.'s unique instant backup procedure. Rest assured that your media files, system settings, and even software updates are always fully synchronized and always up-to-date.



CLICK EFFECTS PRIME HX TECHNICAL SPECIFICATIONS

GENERAL SYSTEM

- **Height:** 3.5in (89mm)
- **Width:** 17.2in (437mm)
- **Depth:** 24.8in (630mm)
- **Weight:** 22.7kg (50lbs)
- **Power Supply:** Dual 740 Watt Redundant Hot Swappable Supplies (80 Plus Platinum)
- **Power Requirements:** AC Input 100-240V, 60-50Hz, 9 Amp Max, 3.2 Amps @ 120VAC
- **OS:** Windows 7 Ultimate 64-bit
- **Processor Family:** Intel® Xeon® E5-1680 v4
- **Memory:** 64 GB DDR4-2400
- **GPU:** NVIDIA® GPU, Quadro P5000 series
- **USB:** (2) USB 2.0 on Rear, (2) USB 3.0 on Rear and (2) USB 3.0 on Front
- **Serial:** (2) DB9 RS232 Serial Ports. (2) RS232 to RS422 Converters Included
- **Network:** (2) RJ45 1 Gbe

STORAGE

- **System:** 2x200 GB SSD(Raid1)
- **Media:** 1.2TB up to 9.6TB, SSD (High Performance RAID5) SDI IO (IF EQUIPPED)
- **Supported Video Standards:**
SD-SDI: 525i NTSC, 625i PAL
HD-SDI: 1080i, 720p, 1080p60
- **Data Format:**
SD: 10-bit, 270 Mb/s ITU-R Bt.601 SMPTE 259M-C
SD: 10-bit, 270 Mb/s ITU-R BT.656-4
HD: 10-bit, 1.485 Gb/s ITU-R Bt.709 SMPTE 292M
UHD: 4x 3G 8-bit 2.97 Gb/s ITU-R Bt.709 SMPTE 424M, Level A and Level B
- **Genlock:** Bi & Tri-level genlock Analog
- **Connector Type:** HD-BNC
- **IO Configurations:** 8 reconfigurable SDI Ports

Outputs: Video or Video + Key

Inputs: All remaining ports can be used as inputs

Embedded Audio:

SDI Input: 16 per channel

SDI Outputs: 16 per channel

DVI/DP (IF EQUIPPED)

Supported Standards:

DP: up to UHD

DVI-D: up to 2560x1600

• **Outputs:** 4x DVI-D 1x DP (1.2)

• **Configuration:** NVIDIA® Mosaic

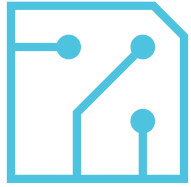
OPTIONS

• **GPI:** 16 (8 IN/8 OUT)

• **AES Audio:** BNC, unbalanced (8) AES3id mono tracks

• **Additional Storage:** expandable to an additional 3.2TB

HX PLATFORM



CLICK EFFECTS PRIME MX TECHNICAL SPECIFICATIONS

GENERAL SYSTEM

- **Height:** 3.5in (89mm)
- **Width:** 17.2in (437mm)
- **Depth:** 24.8in (630mm)
- **Weight:** 22.7kg (50lbs)
- **Power Supply:** Dual 740 Watt Redundant Hot Swappable Supplies (80 Plus Platinum)
- **Power Requirements:** AC Input 100-240V, 60-50Hz, 9 Amp Max, 3.2 Amps @ 120VAC
- **OS:** Windows 7 Ultimate 64-bit
- **Processor Family:** Intel® Xeon® E5-1650 v4
- **Memory:** 32 GB DDR4-2400
- **GPU:** NVIDIA® GPU, Quadro P4000 series
- **USB:** (2) USB 2.0 on Rear, (2) USB 3.0 on Rear and (2) USB 3.0 on Front

- **Serial:** (2) DB9 RS232 Serial Ports. (2) RS232 to RS422 Converters Included
- **Network:** (2) RJ45 1 Gbe

STORAGE

- **System:** 2x200 GB SSD(Raid1)
- **Media:** 1.2TB up to 9.6TB, SSD (High Performance RAID5)

SDI IO (IF EQUIPPED)

- **Supported Video Standards:**
SD-SDI: 525i NTSC, 625i PAL
HD-SDI: 1080i, 720p, 1080p60
- **Data Format:**
SD: 10-bit, 270 Mb/s ITU-R Bt.601 SMPTE 259M-C
SD: 10-bit, 270 Mb/s ITU-R BT.656-4
HD: 10-bit, 1.485 Gb/s ITU-R Bt.709 SMPTE 292M
- **Genlock:** Bi & Tri-level genlock Analog

- **Connector Type:** HD-BNC

- **IO Configurations:** 4 reconfigurable SDI Ports

Outputs: Video or Video + Key

Inputs: All remaining ports can be used as inputs

- **Embedded Audio:**

SDI Input: 16 per channel

SDI Outputs: 16 per channel

DVI (IF EQUIPPED)

- **Supported Standards:**
DVI-D: up to 2560x1600
- **Outputs:** 2x DVI-D
- **Configuration:** NVIDIA® Mosaic

OPTIONS

- **GPI:** 16 (8 IN/8 OUT)
- **AES Audio:** BNC, unbalanced (8) AES3id mono tracks
- **Additional Storage:** expandable to an additional 3.2TB

MX PLATFORM

ABOUT CHYRONHEGO

ChyronHego, a portfolio company of Vector Capital, is a global leader in products, services, and solutions for the broadcast and sports industries. Specializing in live television, news, and sports production, ChyronHego offers some of the industry's most widely deployed solutions — including Lyric®, the world's most popular broadcast graphics creation and playout offering; the all-new CAMIO® Universe newsroom workflow; and TRACAB® Optical Tracking, the global leader in optical sports tracking systems as well as Click Effects, the most proven and versatile stadium broadcast family of graphics products. Headquartered in Melville, New York, ChyronHego also has offices in the Czech Republic, Denmark, Finland, Germany, Mexico, the Netherlands, Norway, Singapore, Slovak Republic, Sweden, and the United Kingdom.

For more information on ChyronHego, visit www.chyronhego.com.

CONTACT SALES AND
SCHEDULE A DEMO @

NORTH AMERICA

+1.631.845.2000 |

EMEA

+46 8 534 88 300 |

LATIN AMERICA

+1.305.972.1396

ASIA/PACIFIC

+65.64071330 |

JOIN THE CONVERSATION
ONLINE WITH CHYRONHEGO @

www.chyronhego.com

Copyright 2019 ChyronHego Corporation. All rights reserved. ChyronHego is a trademark of ChyronHego Corporation. All other tradenames referenced are service marks, trademarks, or registered trademarks of their respective companies. Specifications subject to change without notice.