

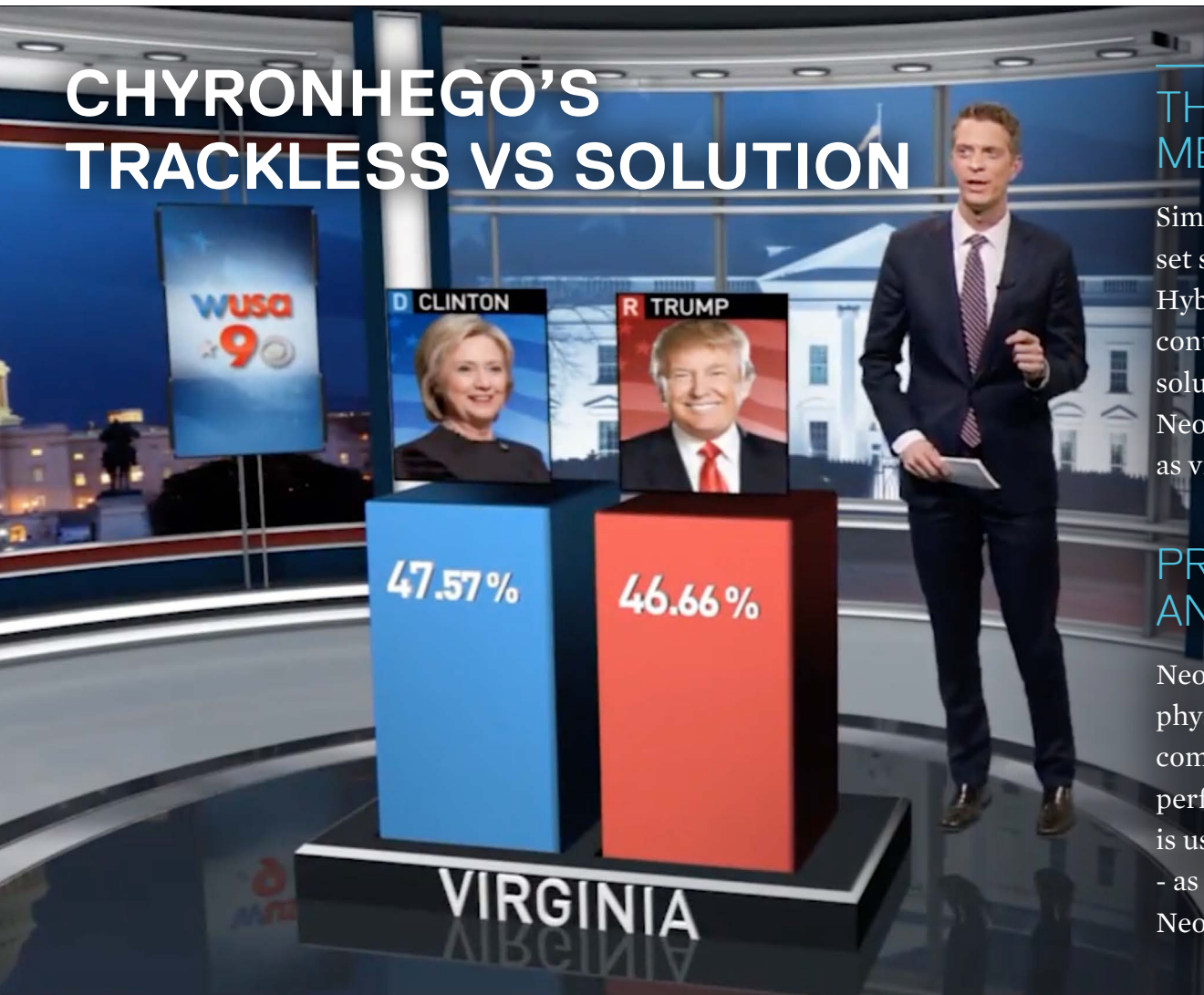


The All-In-One
Virtual Set Media Production Center

NEON

PRODUCT INFORMATION SHEET

CHYRONHEGO'S TRACKLESS VS SOLUTION



THE ALL-IN-ONE VIRTUAL SET MEDIA PRODUCTION CENTER

Simple and Powerful. Hybrid's Neon trackless virtual set system is as simple as it is powerful. Relying on Hybrid's Krypton 3D engine and Ozone external control application, Neon is a sensor-less virtual set solution. Using fixed camera signals on a green screen, Neon allows astonishing virtual camera motions such as virtual roll, pan, travelling and crane movements.

PRODUCTION WORKFLOW AND SPACE SIMPLIFIED

Neon requires very little studio space, as the physical camera remains stationary. All of the complex camera moves that Neon supports are performed in software. Since no tracking system is used, set up time is significantly diminished - as is the cost of the system. This also allows Neon to be a portable virtual studio system.

BILLBOARDING

Billboarding is a feature that, when turned on, allows the talent to remain facing their respective camera, regardless of the position of the virtual camera.

MULTIPLE CAMERA CONTROL AND POWERFUL FUNCTIONS

Neon also has an open interface to social media data and vision mixers, and uses a special widget called Mercury to control virtual camera motion and position, as well as camera switching. Neon, based on a simple PC architecture, can manage up to 5 HD live inputs, and inputs and outputs can be combined.

POWERFUL CHROMA-KEYER TECHNOLOGY

Neon includes powerful internal chroma-keyer software with new color matte technology, noise reduction, and mattes.

UPGRADE TO TRACKING

Neon can be upgraded to a full tracking virtual set solution, using the same graphic engine, simply by adding our Cesium motion tracking software and camera tracking technology.

LIBRARY OF PRE-DESIGNED VIRTUAL STUDIOS

The Graphic package is delivered with a library of pre-designed virtual studios. Since each of these sets is true 3D, they can be customized, and/or branded - using textures, videos and logos - to suit your content, production and identity needs. *See support page for more information on set design.



STREAMING AND VIDEO OVER IP

As streaming content grows, the engine is able to input and output in streaming format (e.g. RTMP, H.264). Several concurrent outputs are supported. This is the perfect solution for your digital feeds, digital newscasts, events and website.

The logo features a stylized cyan outline of a television set with a five-pointed star inside its screen. Below this graphic, the word "KEY" is written in a large, white, sans-serif font, and the word "FEATURES" is written in a smaller, white, sans-serif font directly underneath it.

KEY FEATURES

- Sensor-less technology
- Real-time, software based internal chroma-keyer
- Easy to set up
- Can operate with any existing camera and lens
- Totally portable virtual studio software-based solution
- No need for sophisticated tracking setup and calibration
- Multi camera control
- Up to 5 HD video input streams whether cameras or VTR inputs
- Multiple programs/previews
- Powerful Mercury widget to control unlimited virtual cameras and instant camera switching
- Depth of field

The logo features a stylized blue star with a blue outline, positioned below a blue trapezoidal shape that resembles a keyhole or a stylized 'K'.

KEY FEATURES

- Billboarding
- Playlist of actions
- Incredible list of 2D effects (cut, wipe, PiP...)
- Upgrade to tracking virtual studio available
- On-air graphics module
- Local scene editing and offline preview
- Unlimited number of pre recorded video files (mpeg, avi, .mov)
- Library of pre-designed sets
- Inputs and Outputs also in streaming format (video over IP)
- Powerful shaders (reflection module, refraction, shadows...)
- Adjustable reflection and shadows for talent

ABOUT CHYRONHEGO

ChyronHego, a portfolio company of Vector Capital, is a global leader in products, services, and solutions for the broadcast and sports industries. Specializing in live television, news, and sports production, ChyronHego offers some of the industry's most widely deployed solutions — including Lyric®, the world's most popular broadcast graphics creation and playout offering; the all-new CAMIO® Universe newsroom workflow; and TRACAB® Optical Tracking, the global leader in optical sports tracking systems as well as Click Effects, the most proven and versatile stadium broadcast family of graphics products. Headquartered in Melville, New York, ChyronHego also has offices in the Czech Republic, Denmark, Finland, Germany, Mexico, the Netherlands, Norway, Singapore, Slovak Republic, Sweden, and the United Kingdom.

For more information on ChyronHego, visit www.chyronhego.com.

CONTACT SALES AND
SCHEDULE A DEMO @

NORTH AMERICA

+1.631.845.2000 |

EMEA

+46 8 534 88 300 |

LATIN AMERICA

+1.305.972.1396

ASIA/PACIFIC

+65.64071330 |

JOIN THE CONVERSATION
ONLINE WITH CHYRONHEGO @

www.chyronhego.com

Copyright 2019 ChyronHego Corporation. All rights reserved. ChyronHego is a trademark of ChyronHego Corporation. All other tradenames referenced are service marks, trademarks, or registered trademarks of their respective companies. Specifications subject to change without notice.